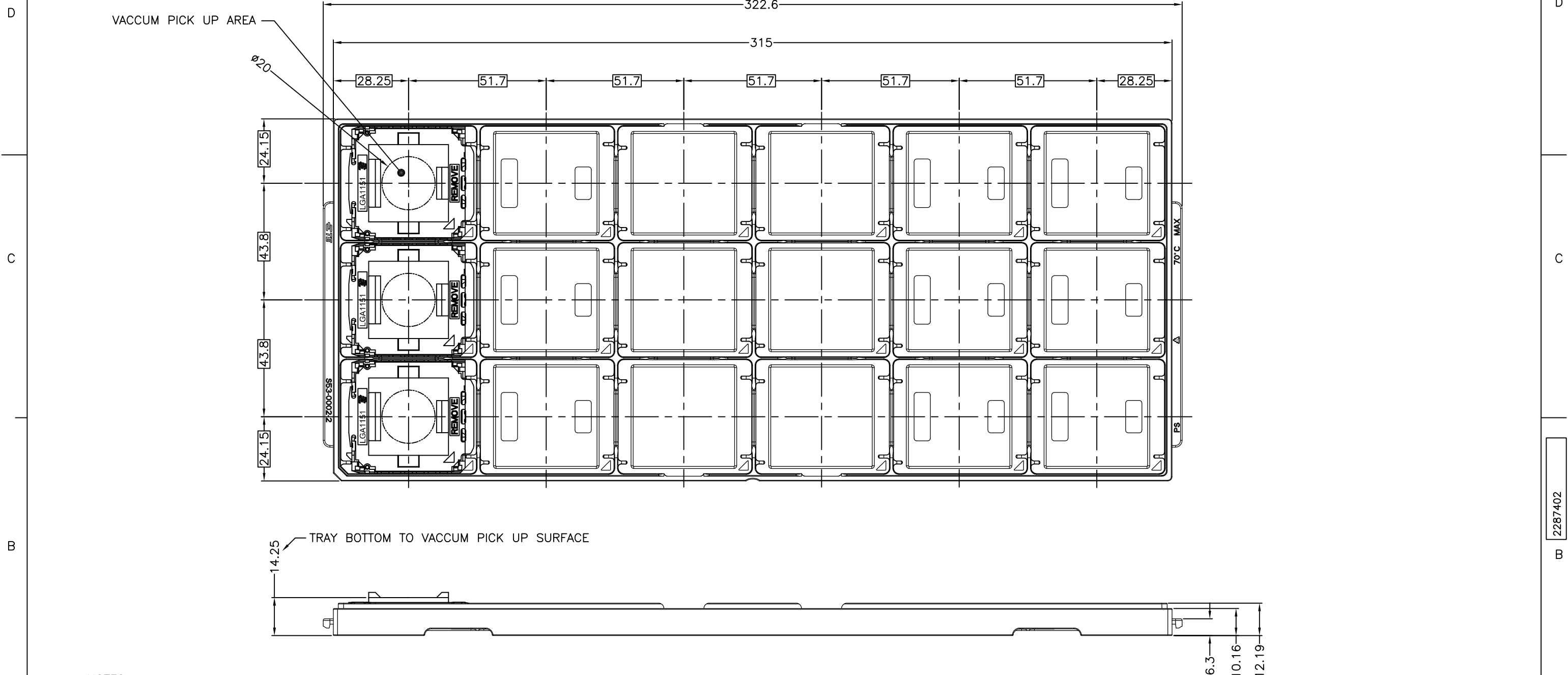


THIS DRAWING IS UNPUBLISHED. RELEASED FOR PUBLICATION MAR ,2011.
 © COPYRIGHT 2011 By Tyco Electronics Japan G.K. ALL RIGHTS RESERVED.

LOC		DIST		REVISIONS			
J	-	P	LTR	DESCRIPTION	DATE	DWN	APVD
		B2	REVISED		FEB.17'16	J.W	S.L



- NOTES:
- MATERIAL
 - HOUSING : LCP, HIGH TEMP, THERMO-PLASTIC, UL94V-0, BLACK
 - CONTACT : COPPER ALLOY
FINISH : Au PL. AT CONTACT AREA ON OVERALL OVER Ni UNDER PL. 0.00127 MIN.
 - SOLDER BALL : Sn/Ag/Cu
 - CAP : LCP, HIGH TEMP. THERMO-PLASTIC, UL94V-0, BLACK
 - INDICATED DATE CODE ON THE HSG

2287402-1,-2,-3: AS SHOWN

2287402-3	18	0.76 um MIN Au PL
2287402-2	18	G/F Au PL
2287402-1	18	0.38 um MIN Au PL
PART NUMBER	SOCKET QTY PRE TRAY	DESCRIPTION

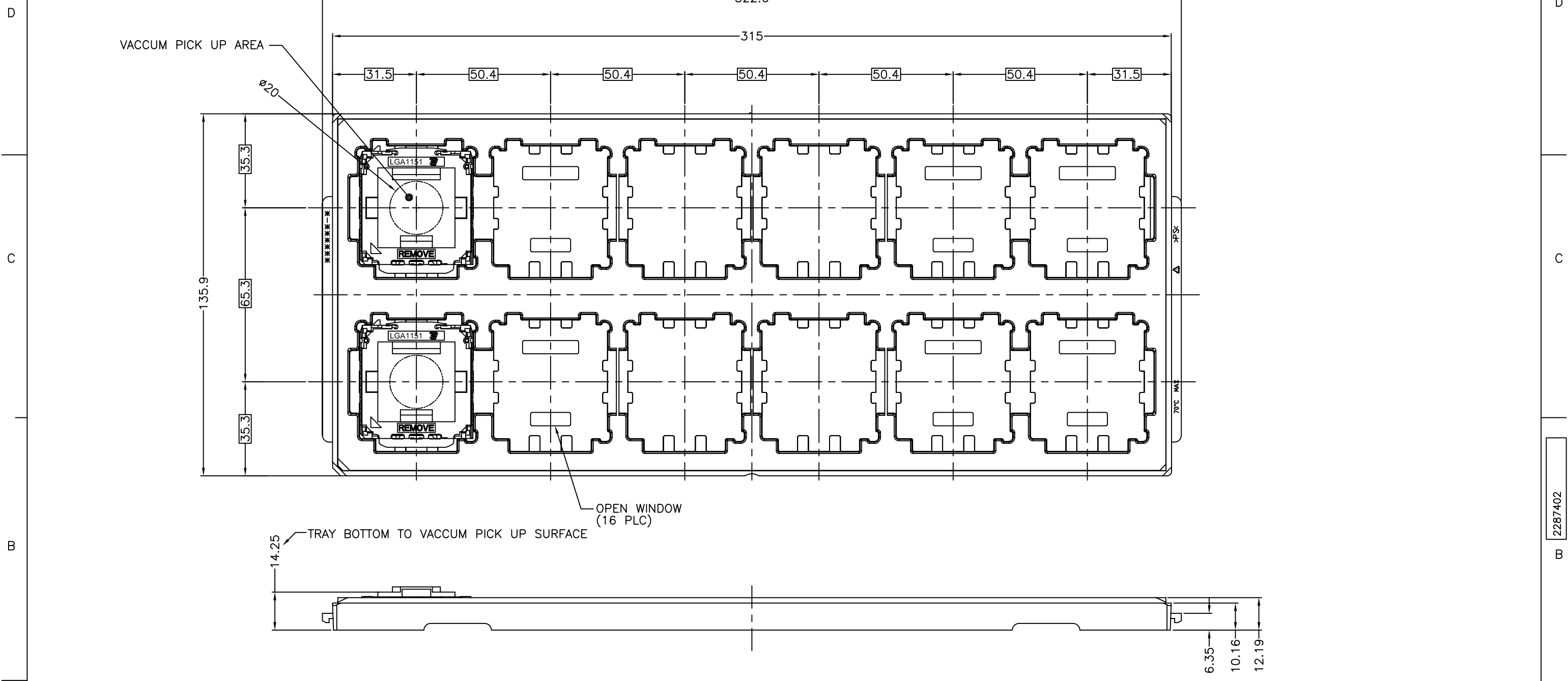
THIS DRAWING IS A CONTROLLED DOCUMENT.

DWN	NOV.'2014	JEFF WANG	
CHK	NOV.'2014	MURRAY LU	
APVD	NOV.'2014	SIMON LI	
PRODUCT SPEC	108-78586	NAME	SOCKET ASSY
APPLICATION SPEC	114-5444	NAME	LGA1151
WEIGHT	9.8g	SIZE	A2
CUSTOMER DRAWING	00779	CAGE CODE	C=2287402
SCALE	1:1	SHEET	1 of 6
REV	B2	RESTRICTED TO	-

TE Connectivity

THIS DRAWING IS UNPUBLISHED. RELEASED FOR PUBLICATION MAR , 2011.
 © COPYRIGHT 2011 By Tyco Electronics Japan G.K. ALL RIGHTS RESERVED.

LOC	DIST	REVISIONS			DATE	DWN	APVD
J	-	P	LTR	DESCRIPTION			
		-	-	SEE SHEET 1	-	-	-



1-2287402-1,-2,-3: AS SHOWN

1-2287402-3	12	0.76 um MIN Au PL
1-2287402-2	12	G/F Au PL
1-2287402-1	12	0.38 um MIN Au PL
PART NUMBER	SOCKET QTY PRE TRAY	DESCRIPTION

THIS DRAWING IS A CONTROLLED DOCUMENT.

DWN	NOV.'2014	JEFF WANG	
CHK	NOV.'2014	MURRAY LU	
APVD	NOV.'2014	NAME	SIMON LI
PRODUCT SPEC	108-78586	SOCKET ASSY LGA1151	
APPLICATION SPEC	114-5444	SIZE	A2
WEIGHT	9.8g	CAGE CODE	00779
CUSTOMER DRAWING	SCALE	1:1	SHEET
			2 of 6
			REV B2

TE Connectivity

4

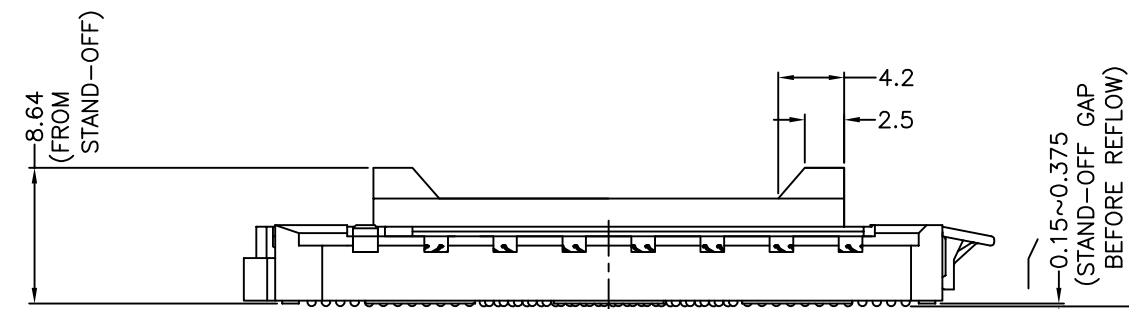
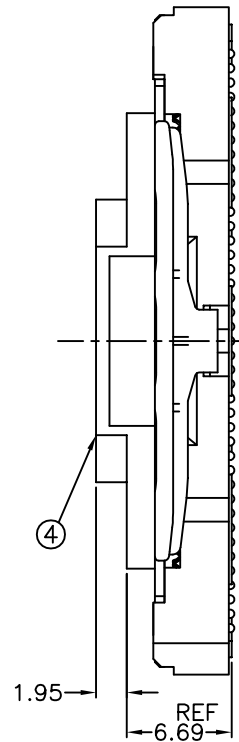
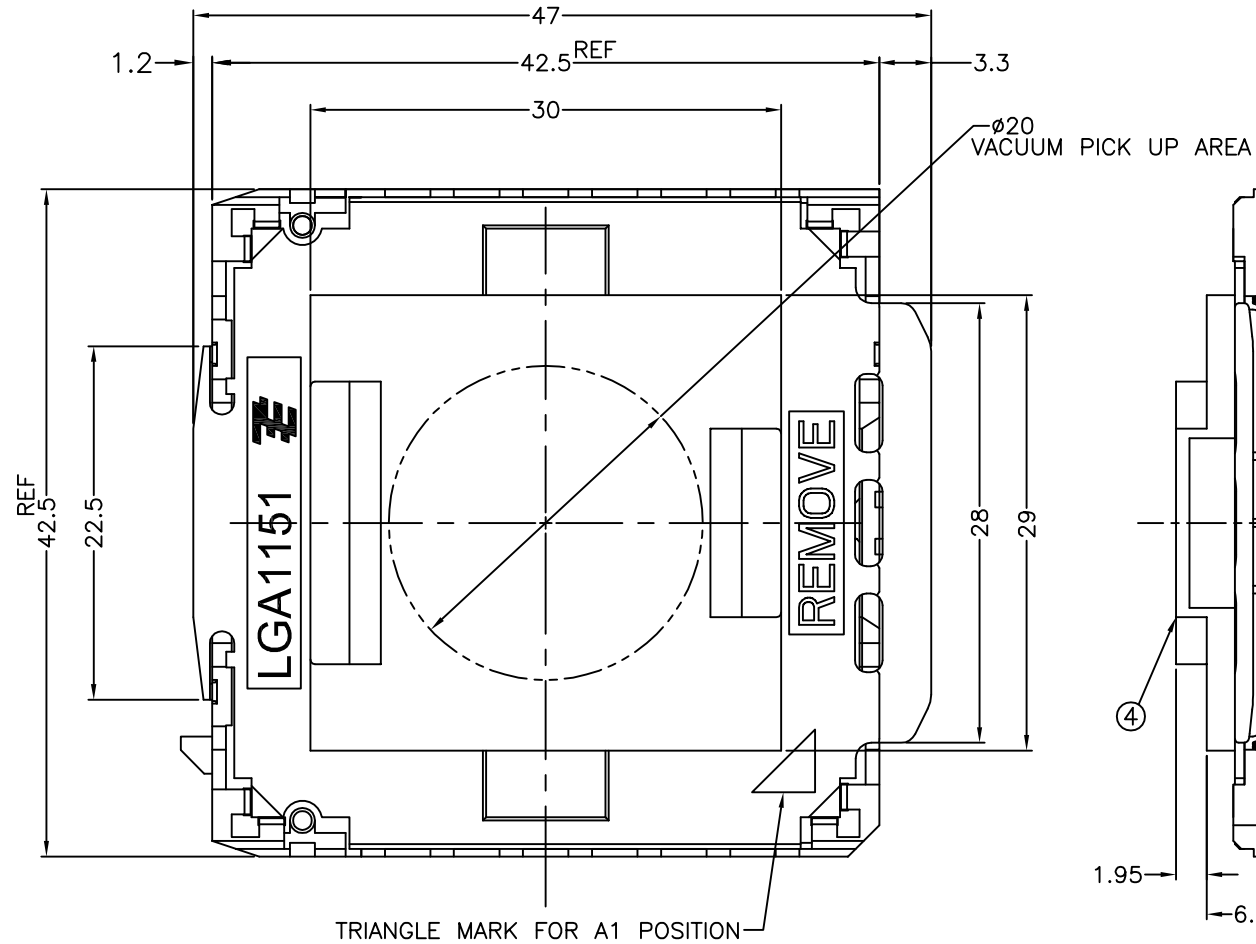
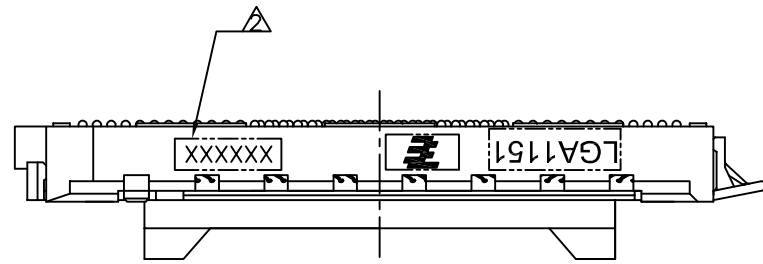
3

2

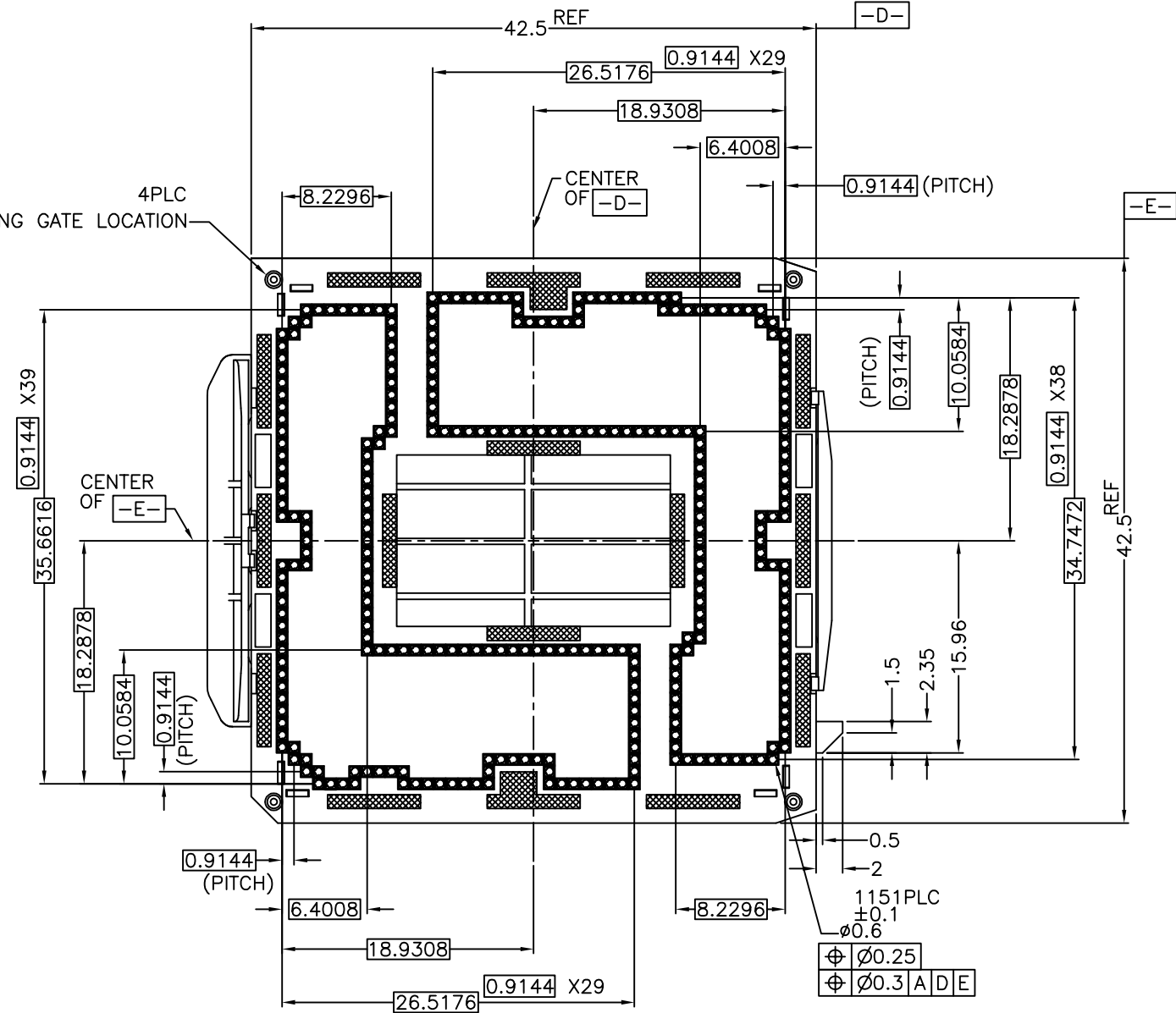
1

THIS DRAWING IS UNPUBLISHED. RELEASED FOR PUBLICATION
 © COPYRIGHT - By Tyco Electronics Japan G.K. ALL RIGHTS RESERVED.

LOC		DIST		REVISIONS			DATE	DWN	APVD
P	LTR	DESCRIPTION							
-	-	SEE SHEET 1			-	-	-	-	-



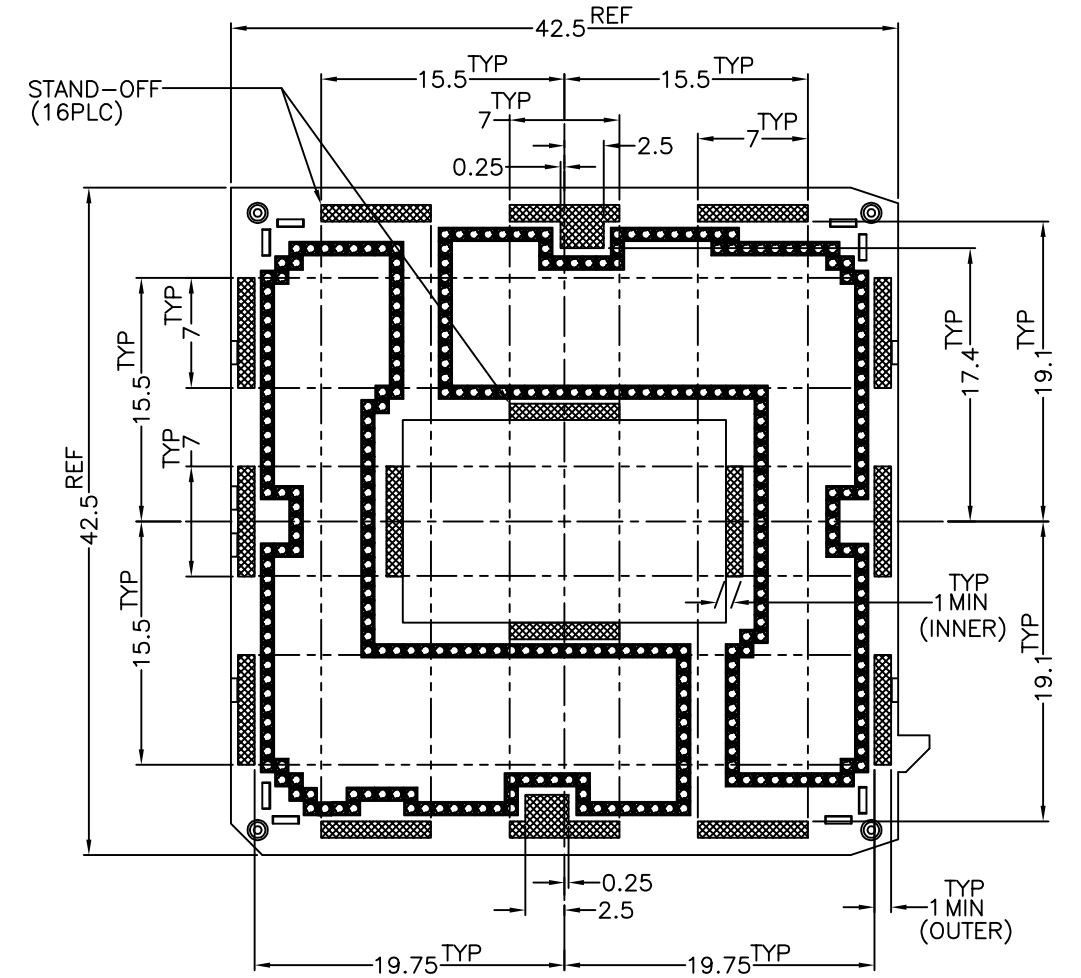
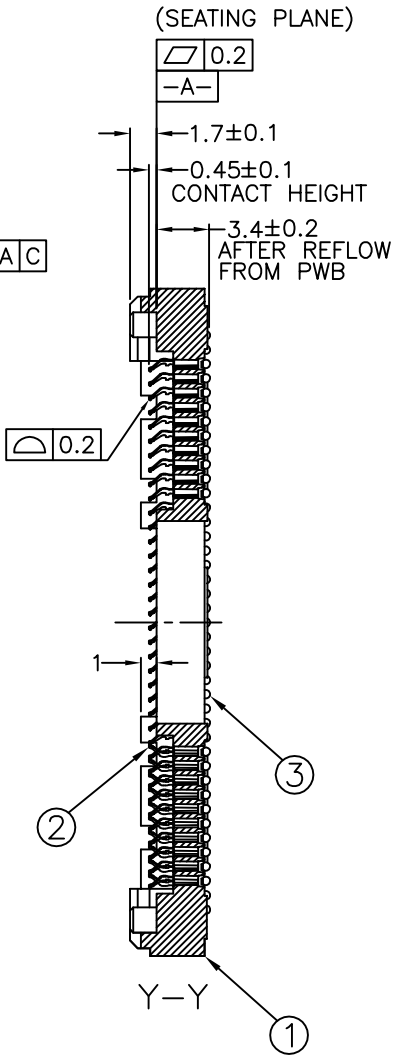
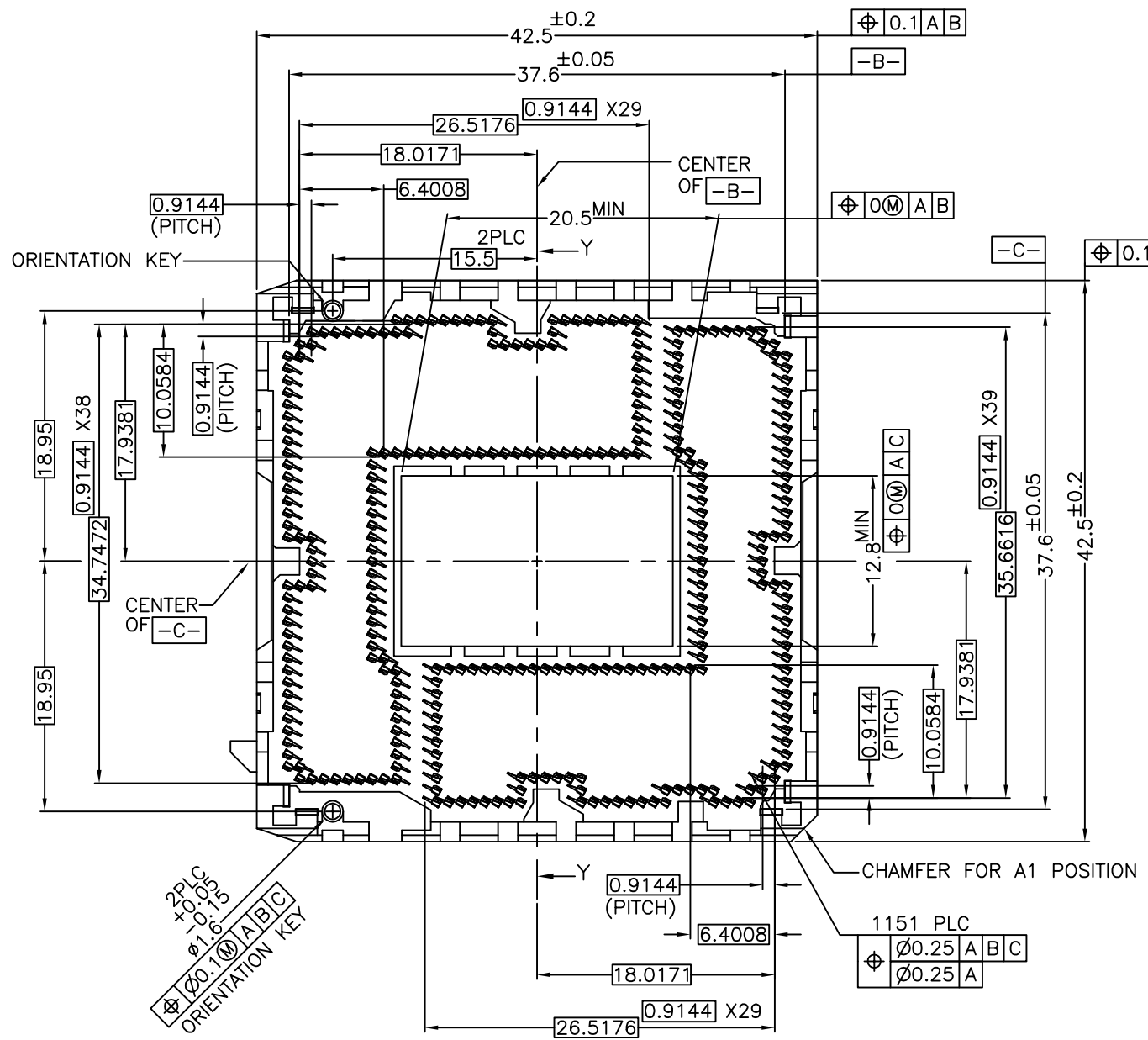
0.2 (SOLDER BALL COPLANARITY)



2287402-*, 1-2287402-*: AS SHOWN

THIS DRAWING IS A CONTROLLED DOCUMENT.		DWN			TE Connectivity	
DIMENSIONS: 単位: 寸 mm		CHK			NAME 名称	
TOLERANCES UNLESS OTHERWISE SPECIFIED: 一般公差		APVD	PRODUCT SPEC 製品規格		SIZE	A2
0-PLC ±0.3		APPLICATION SPEC 取付適用規格		CAGE CODE	00779	DRAWING NO 番号
1-PLC ±0.3		WEIGHT		C=2287402		RESTRICTED TO
2-PLC ±0.3		CUSTOMER DRAWING		SCALE	NTS	SHEET
3-PLC ±0.3		MATERIAL 材料		3 of 6	REV	B2
4-PLC ±0.3		FINISH 仕上				

LOC		DIST		REVISIONS			DATE	DWN	APVD
P	LTR	DESCRIPTION							
-	-	SEE SHEET 1			-	-	-	-	-



2287402-*, 1-2287402-*: AS SHOWN

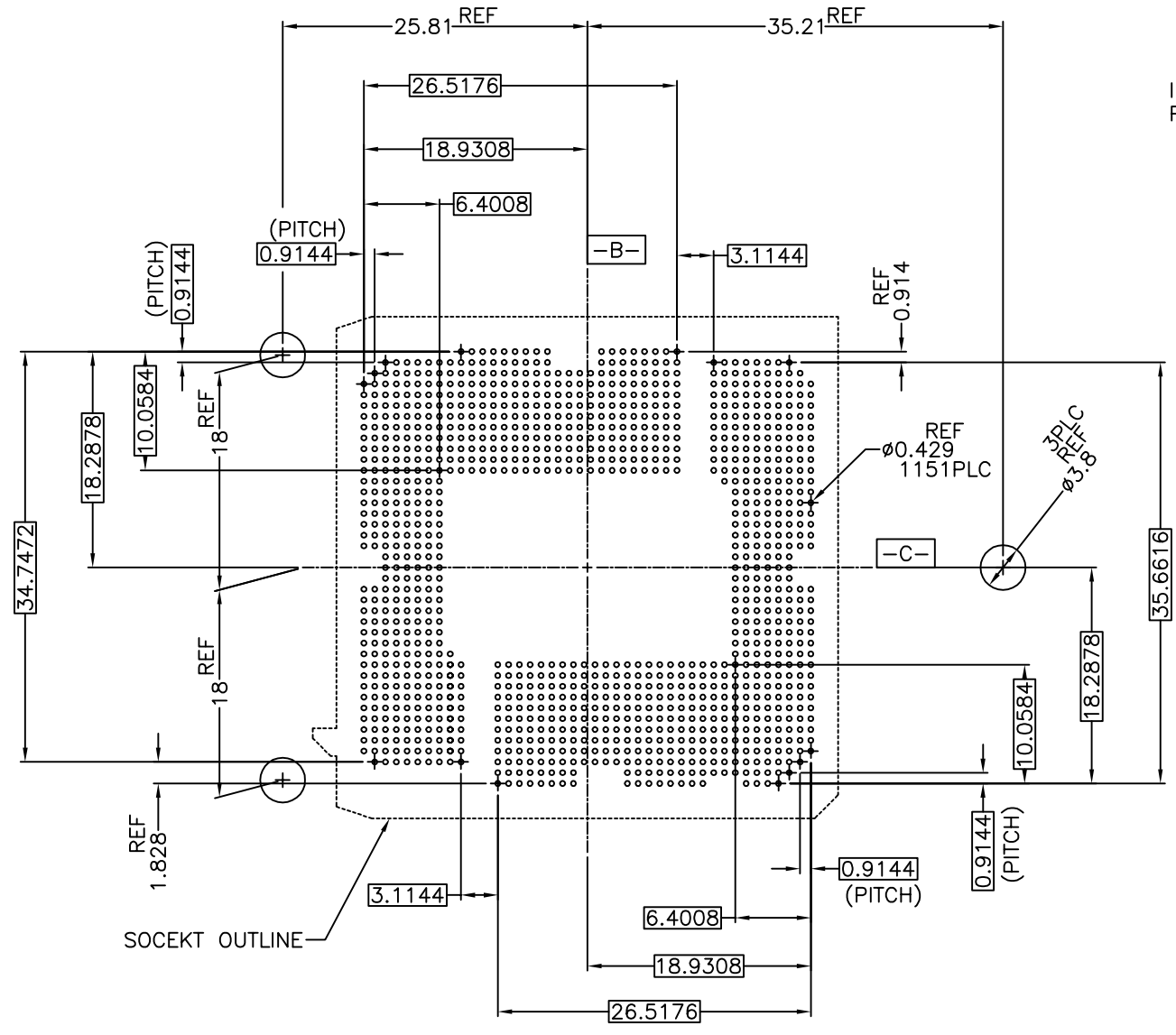
THIS DRAWING IS A CONTROLLED DOCUMENT.		DWN			TE Connectivity	
DIMENSIONS: 単位: 寸 mm		CHK			NAME 名称	
TOLERANCES UNLESS OTHERWISE SPECIFIED: 一般公差		APVD	PRODUCT SPEC 製品規格		SIZE	A2
0-PLC ±0.3 1-PLC ±0.3 2-PLC ±0.3 3-PLC ±0.3 4-PLC ±0.3 ANGLES ±		APPLICATION SPEC 取付適用規格	DRAWING NO 番号		CAGE CODE	00779
MATERIAL 材料		WEIGHT	C-2287402		DRAWING NO	2287402
		CUSTOMER DRAWING	SCALE 尺度		NTS	SHEET 4 of 6
			REV		B2	

THIS DRAWING IS UNPUBLISHED. RELEASED FOR PUBLICATION
 © COPYRIGHT - By Tyco Electronics Japan G.K. ALL RIGHTS RESERVED.

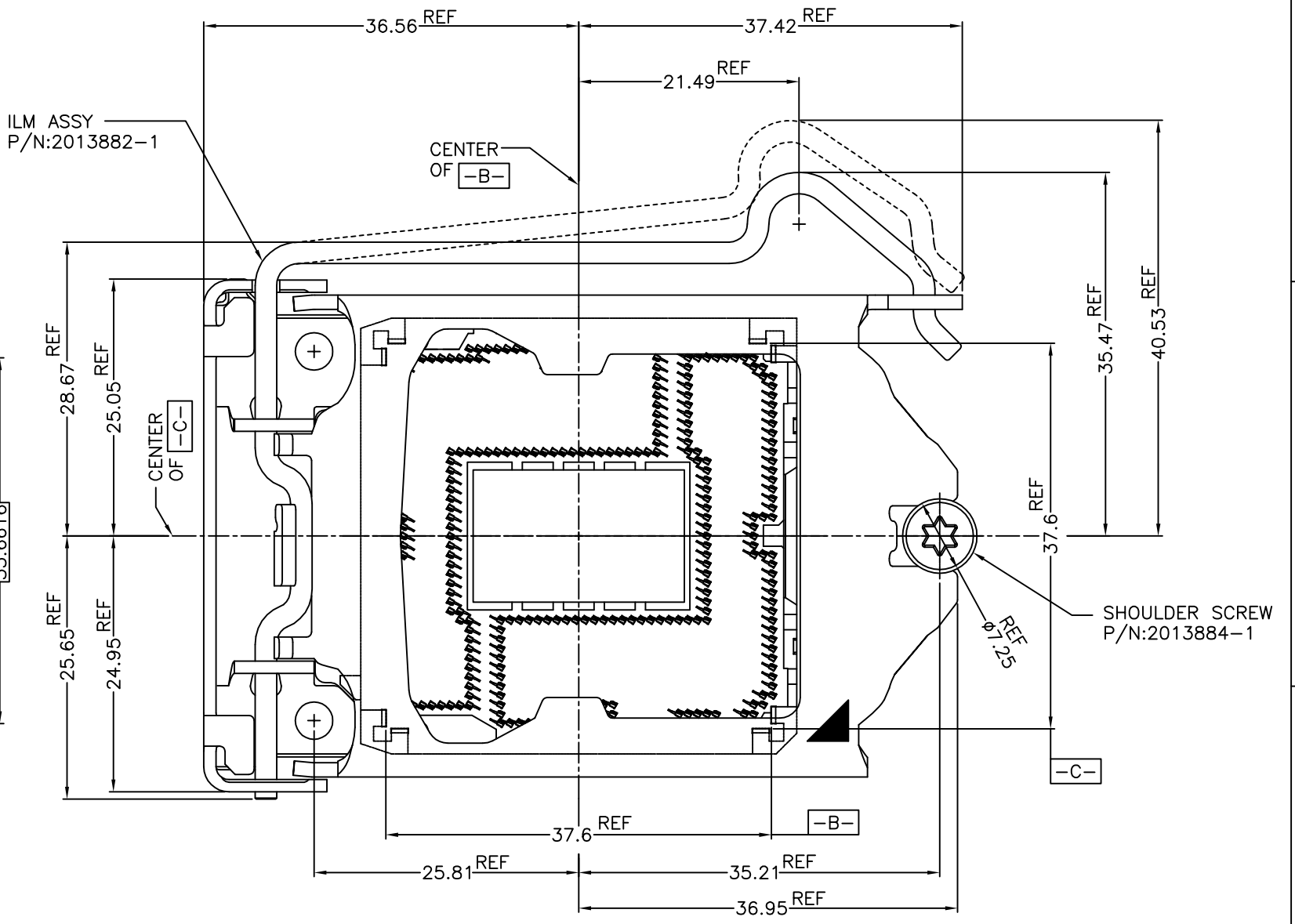
LOC	DIST	REVISIONS			DATE	DWN	APVD
		P	LTR	DESCRIPTION			
		-	-	SEE SHEET 1	-	-	-

D
C
B
A

D
C
B
A



REFERENCE PATTERN LAYOUT



ILM ASSEMBLY OCCUPATION AREA (REFERENCE)
 CAP IS NOT SHOWN ON THIS VIEW

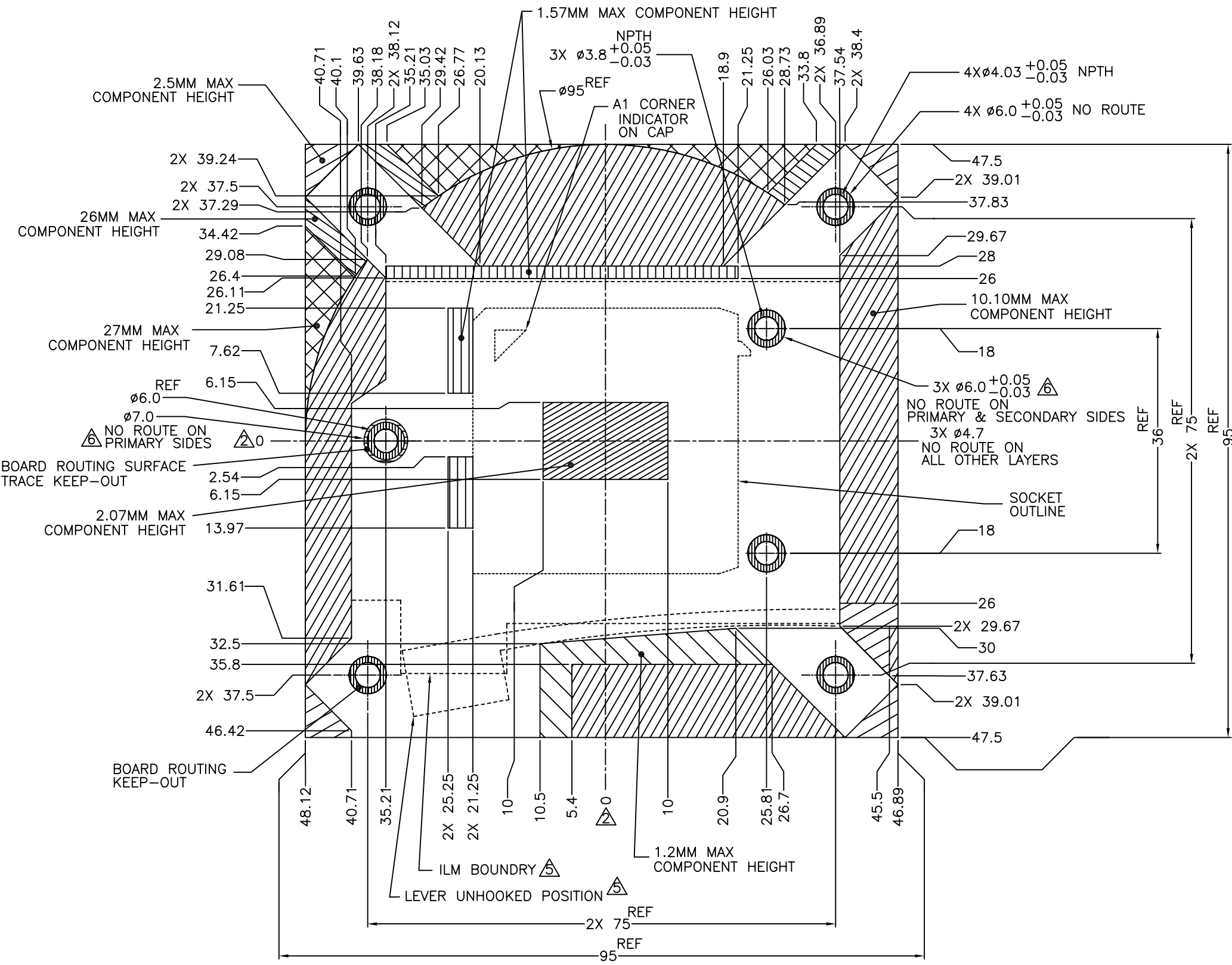
FOR GENERAL BOARD DESIGN, PLEASE REFER TO THE THERMAL AND MECHANICAL DESIGN GUIDELINES(TMDG) PROVIDED BY INTEL CORPORATION

A

A

THIS DRAWING IS A CONTROLLED DOCUMENT.		DWN	TE Connectivity	
DIMENSIONS: 単位: 寸 mm		CHK	NAME 名称	
TOLERANCES UNLESS OTHERWISE SPECIFIED: 一般公差		APVD	PRODUCT SPEC 製品規格	
0-PLC ± 0.3		APPLICATION SPEC 取付適用規格	SIZE	RESTRICTED TO
1-PLC ± 0.3		WEIGHT	CAGE CODE	DRAWING NO 番号
2-PLC ± 0.3		CUSTOMER DRAWING	A2	00779
3-PLC ± 0.3		SCALE 尺度	C=2287402	
4-PLC ± 0.3		NTS	SHEET 5 of 6	
ANGLES 寸上		REV B2		

LOC	DIST	REVISIONS					
		P	LTR	DESCRIPTION	DATE	DWN	APVD
-	-	-	-	SEE SHEET 1	-	-	-



- NOTES (APPLIED TO SHEET 5 OF 5):
1. DIMENSIONS ARE IN MILLIMETERS
 2. \triangle GEOMETRIC CENTER OF SOCKET HOUSING CAVITY
 3. BOARD COMPONENT KEEP-INS AND MECHANICAL COMPONENT KEEP-OUTS TO BE UTILIZED WITH SUFFICIENT ALLOWANCES FOR PLACEMENT AND SIZE TOLERANCES, ASSEMBLY PROCESS ACCESS, AND DYNAMIC EXCURSIONS.
 4. ASSUME SYMMETRY FOR UNDIMENSIONED CORNERS AND EDGES. \triangle FOR UNDEFINED DIMENSIONS, REFER TO THERMAL AND MECHANICAL DESIGN GUIDELINE PROVIDED BY INTEL CORPORATION.
 5. \triangle COPPER PAD ON PRIMARY SIDE, NON-GROUNDED. COPPER PAD CAN INSET A MAXIMUM OF 0.127MM FROM THE NO ROUTE EDGE
 6. \triangle COMBINED COMPONENT AND SOLDER PASTE HEIGHT INCLUDING TOLERANCES AFTER REFLOW.

LEGEND	
	SOCKET/THERMAL/MECHANICAL COMPONENT KEEP-INS
	10.10MM MAX COMPONENT HEIGHT \triangle
	1.57MM MAX COMPONENT HEIGHT \triangle
	1.2MM MAX COMPONENT HEIGHT \triangle
	BOARD ROUTING KEEP-OUT
	27MM MAX COMPONENT HEIGHT \triangle
	BOARD ROUTING SURFACE TRACE KEEP-OUT \triangle
	2.07MM MAX COMPONENT HEIGHT \triangle
	2.5MM MAX COMPONENT HEIGHT \triangle
	26MM MAX COMPONENT HEIGHT \triangle

COMPONENT KEEP-INS AND MECHANICAL COMPONENT KEEP-OUTS
 FOR REFERENCE ONLY, PLEASE REFER TO THE THERMAL AND MECHANICAL
 DESIGN GUIDELINES(TMDG) PROVIDED BY INTEL CORPORATION

THIS DRAWING IS A CONTROLLED DOCUMENT.

DIMENSIONS: 単位: 寸 mm	TOLERANCES UNLESS OTHERWISE SPECIFIED: 一般公差	DWN	TE Connectivity
	0-PLC ± 1-PLC ± 2-PLC ± 3-PLC ± 4-PLC ± ANGLES ±	CHK	NAME
MATERIAL 材料	FINISH 仕上	APVD	SOCKET ASSY LGA1151
		PRODUCT SPEC 製品規格	SIZE CAGE CODE DRAWING NO 番号
		APPLICATION SPEC 取付適用規格	A2 00779 C=2287402
		WEIGHT	RESTRICTED TO
		CUSTOMER DRAWING	SCALE 尺度 NTS SHEET 6 of 6 REV B2

Mouser Electronics

Authorized Distributor

Click to View Pricing, Inventory, Delivery & Lifecycle Information:

[TE Connectivity:](#)

[2287402-1](#)