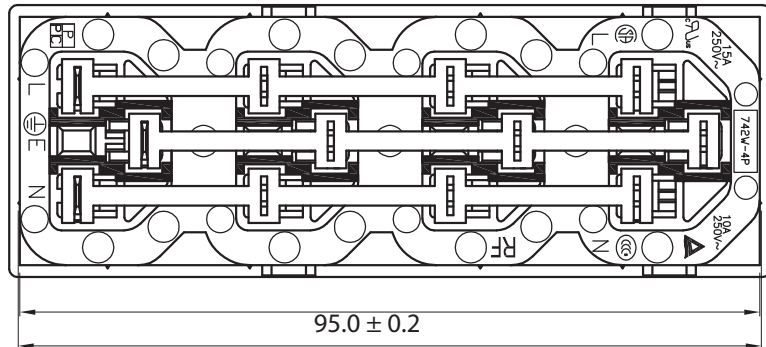
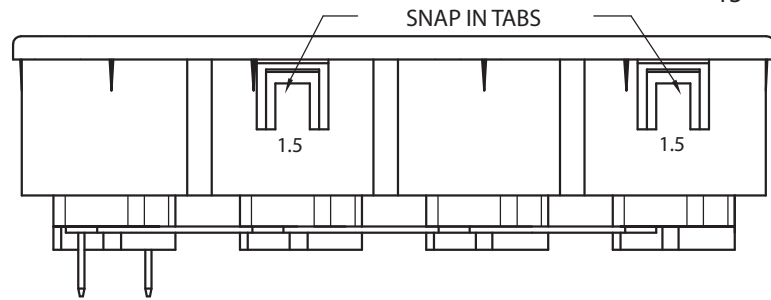
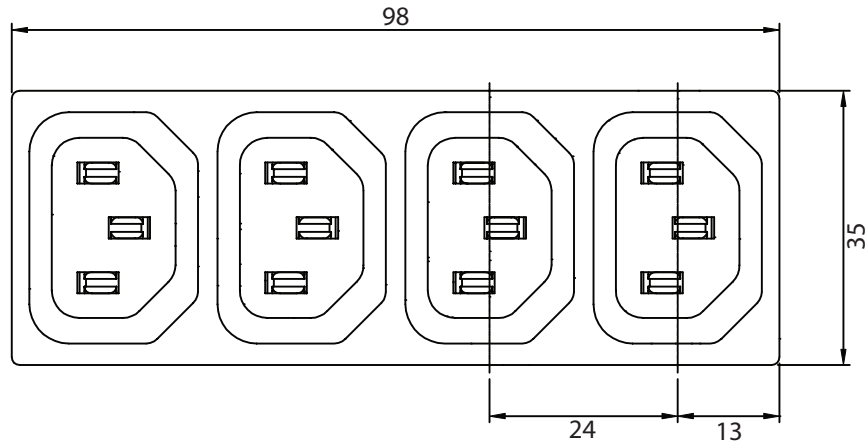


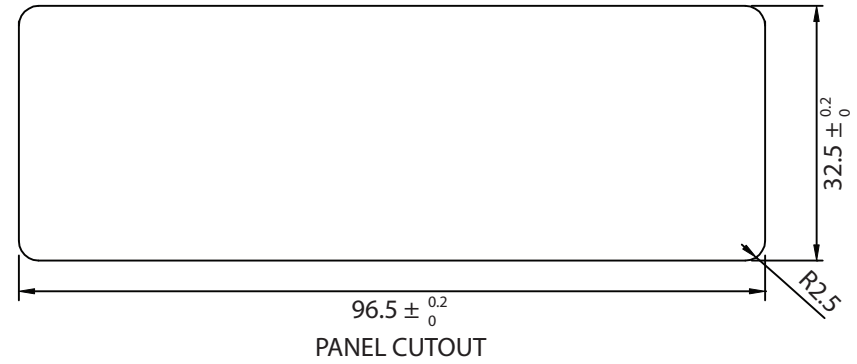
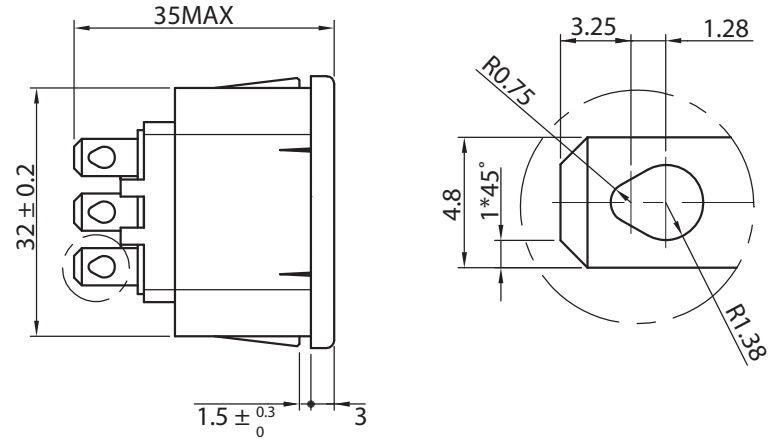
THESE DRAWINGS ARE THE PROPERTY OF QUALTEK ELECTRONICS AND NOT TO BE REPRODUCED FOR OR COMMUNICATED TO A THIRD PARTY WITHOUT THE EXPRESS WRITTEN PERMISSION OF AN OFFICER OF QUALTEK ELECTRONICS.

REVISION			
REV.	DESCRIPTION	DATE	APPROVED
B	RoHS Compliancy	06-01-06	DP
C	Updated Dmensions and Approvals	06-13-16	LY



NOTES:  
 $95.0 \pm 0.2$   
 $95.4 \pm 0.2$

MATERIAL:  
 HOUSING: PC BLACK COLOR  
 TERMINALS: TIN PLATED  $t=0.8\text{mm}$   
 RATING:  
 UL, cUL, CSA: 15A 250V AC  
 TUV, CCC: 10A 250V AC  
 APPROVALS: UL, cUL, CSA TUV, CCC  
 PANEL THICKNESS: 1.5mm  
 RoHS COMPLIANT



**CONTROLLED**

Dim range (mm)	Tolerance +/- (mm)	Qualtek Electronics Corp. PPC DIVISION		
		Part Number: 742W-15/56	RoHS Compliant	
0-1	0.15	Description: AC RECEPTACLE		
1-6	0.20			
6-18	0.30	UNIT: mm	REV. C	
18-50	0.50		Drawn / Date	Checked / Date
50-120	0.70	B.Zhang 06-03-05	06-03-05	JJH / 06-03-05
120-250	0.90			
250-500	1.20			