

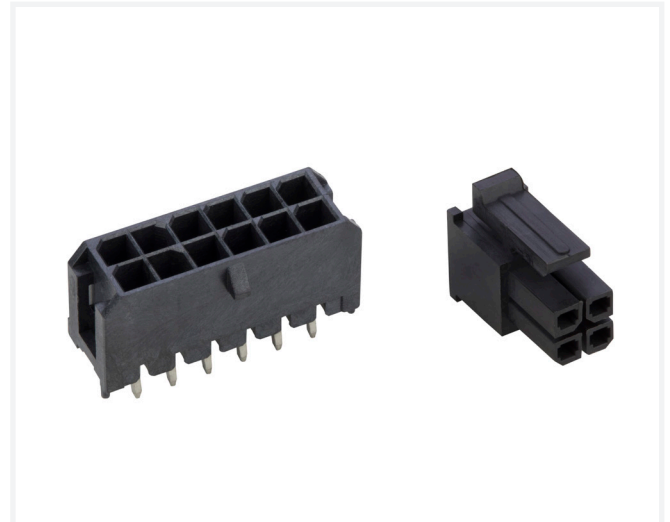
Micro Power Plus 3.0 Connector System – G88MP Series

MICRO POWER PLUS CARRIES 12.5A PER PIN FOR WIRE-TO-BOARD APPLICATIONS

Micro Power Plus 3.0 connector system is a 3.00mm pitch power connector designed for wire-to-board applications. It is mainly used for power applications and supports current rating up to 12.5A per pin and wire gauge range from 30–16AWG. It comes in 2 to 24 circuits for dual row and 2–12 circuits for single row.

Low insertion force version is also available.

- Current rating up to 12.5A per pin
- 2 to 24 circuits for dual row and 2–12 circuits for single row
- Low insertion force type available
- Boardlock, SMT, Through hole termination options available



TARGET MARKETS



FEATURES

- Compact power connector with current rating of 12.5A per pin
- Single and dual row option
- Through hole and SMT option
- Scoop-proof housings
- Fully isolated pins
- High temperature LCP housing meets UL94V-0

BENEFITS

- Certified by EIA (Energy Information Administration) and UL
- Different configurations to meet a variety of application needs
- Prevents mismatching between header and receptacle
- Protects contacts against potential damage during handling and mating
- Meet safety requirements and able to withstand high temperatures

TECHNICAL INFORMATION

MATERIAL

- Housing: High Temperature Thermoplastic, complies with UL 94V-0, Black and natural option
- Contact: Copper alloy, selective gold plating on contact area, 100u" tin plated on soldering tail, 50u" min nickel under-plated overall

MECHANICAL PERFORMANCE

- Insertion Force: 8N max. per pin
- Extraction Force: 2N min. per pin
- Terminal Retention force in Housing for cable assembly: 24.5N min.

ELECTRICAL PERFORMANCE

- Current Rating: 12.5A per contact
- Contact Resistance: 30mΩ
- Voltage: 250V AC

ENVIRONMENTAL

- Humidity:
 - Contact Resistance
 - R=+20mΩ max.
- Thermal Aging:
 - No evidence of damage
 - Contact Resistance
 - R=+20mΩ max.
- Salt Spray:
 - Contact Resistance
 - R=+20mΩ max.
- Cold Resistance:
 - R=+20mΩ max
- Resistance to soldering heat: No evidence of physical damage

PACKAGING

- Tape and Reel
- Tray

APPROVALS AND CERTIFICATIONS

- UL
- EIA

SPECIFICATION

- Amphenol Product Specification: PS-7528

TARGET MARKETS/APPLICATIONS



Telecommunications



Drone



Data Center
Server
Storage



Industrial



Medical

PART NUMBERS

Description	Pitch	Part Numbers
Micro Power Plus, Header Straight Dip type	3.0 mm	G88MPXX1X2CEU
Micro Power Plus, Header Straight Dip type	3.0 mm	G88MPXX1X2KEU
Micro Power Plus, Header Straight Dip type	3.0 mm	G88MPXX1X2TEU
Micro Power Plus, Header Straight Dip type	3.0 mm	G88MPXX1X2T3REU
Micro Power Plus, Header Right Angle Dip type	3.0 mm	G88MPXX0X1C1EU
Micro Power Plus, Header Right Angle Dip type	3.0 mm	G88MPXX0X1CEU
Micro Power Plus, Header Right Angle Dip type	3.0 mm	G88MPXX0X1T1EU
Micro Power Plus, Header Right Angle Dip type	3.0 mm	G88MPXX0X1TEU
Micro Power Plus, Header Right Angle Dip type	3.0 mm	G88MPXX0X1XCEU
Micro Power Plus, Cable Housing	3.0 mm	G88MPHXX22CEU
Micro Power Plus, Cable Terminal, AWG20–30	3.0 mm	G88MPC0X32CEU
Micro Power Plus, Cable Terminal, AWG16	3.0 mm	G88MPC0232ACEU

Mouser Electronics

Authorized Distributor

Click to View Pricing, Inventory, Delivery & Lifecycle Information:

Amphenol:

[G88MPB02002C1EU](#) [G88MP22102CEU](#) [G88MP24102CEU](#) [G88MP20102CEU](#) [G88MP04102KEU](#)
[G88MP02102KEU](#) [G88MP06102KEU](#) [G88MP02102CEU](#) [G88MP06102CEU](#) [G88MP04102CEU](#) [G88MP20102KEU](#)
[G88MP24102KEU](#) [G88MP22102KEU](#) [G88MPB11002C1EU](#) [G88MP16102KEU](#) [G88MP12102KEU](#) [G88MP14102KEU](#)
[G88MP10102KEU](#) [G88MP14102CEU](#) [G88MP10102CEU](#) [G88MP12102CEU](#) [G88MP16102CEU](#) [G88MP08102CEU](#)
[G88MP18102CEU](#) [G88MPB10002C1EU](#) [G88MPB12002C1EU](#) [G88MPB03002C1EU](#) [G88MPB07002C1EU](#)
[G88MPB09002C1EU](#) [G88MP08102KEU](#) [G88MPB08002C1EU](#) [G88MPB04002C1EU](#) [G88MPB05002C1EU](#)
[G88MP18102KEU](#) [G88MPB06002C1EU](#) [G88MPB02012C1EU](#) [G88MPB04002CEU](#) [G88MPB10002CEU](#)
[G88MPH0822CEU](#) [G88MPH1222CEU](#) [G88MPH1422CEU](#) [G88MPH0422CEU](#) [G88MPH0622CEU](#)
[G88MP041022CEU](#) [G88MP101022CEU](#) [G88MP201027DEU](#) [G88MP061022CEU](#) [G88MP081322CEU](#)
[G88MP16122KEU](#) [G88MP08136KEU](#) [G88MP24102MEU](#) [G88MP22101KEU](#) [G88MP04102MEU](#) [G88MP06106KEU](#)
[G88MP08101KEU](#) [G88MP08102MEU](#) [G88MP08132KEU](#) [G88MP04001TEU](#) [G88MP10001TEU](#) [G88MP12001TEU](#)
[G88MP12021TEU](#) [G88MP16001TEU](#) [G88MP18001TEU](#) [G88MP20001TEU](#) [G88MP24001TEU](#) [G88MP06001TEU](#)
[G88MP08001TEU](#) [G88MPC0232BCEU](#) [G88MP08C00DEU](#) [G88MP10C00DEU](#) [G88MP12C00DEU](#)
[G88MP04C00DEU](#) [G88MPCA0262CEU](#) [G88MPCA0362CEU](#) [G88MPCA0462CEU](#) [G88MPH0421CEU](#)
[G88MPH0422AEU](#) [G88MPH0622AEU](#) [G88MPH0822AEU](#) [G88MPH1022AEU](#) [G88MPH1222AEU](#) [G88MPH1422AEU](#)
[G88MPH2022AEU](#) [G88MPH2422AEU](#) [G88MP16001T1EU](#) [G88MP081028DREU](#) [G88MP121028DREU](#)
[G88MP120011C1EU](#) [G88MP08C00DIEU](#) [G88MP100011CEU](#) [G88MP100011C1EU](#) [G88MP041028CREU](#)
[G88MPC0332CEU](#) [G88MP081020DREU](#) [G88MPB04103CEU](#) [G88MP061028CREU](#) [G88MPH0421AEU](#)
[G88MP0200AC1HR](#) [G88MP021028CREU](#) [G88MP0400AC1HR](#)