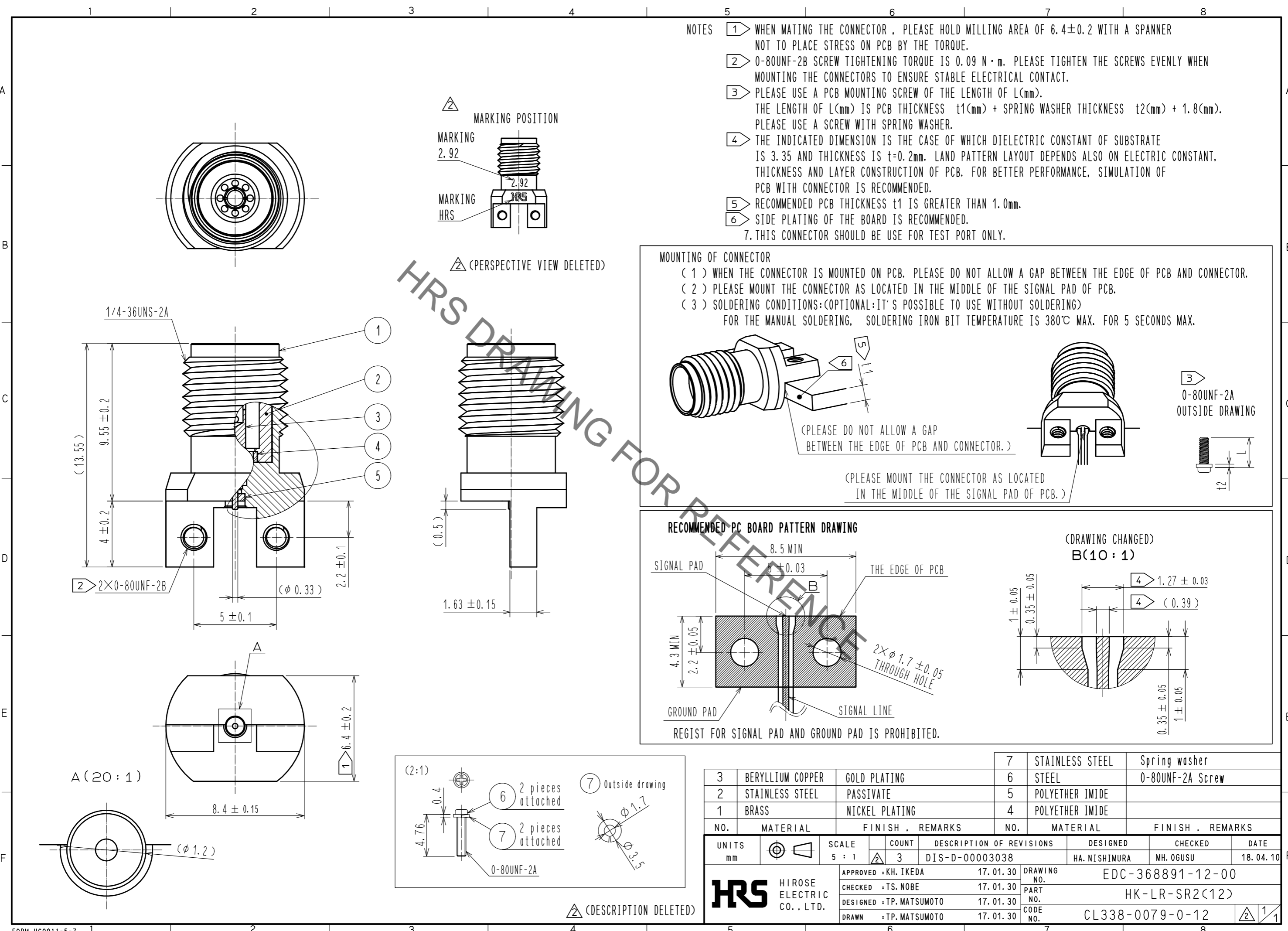
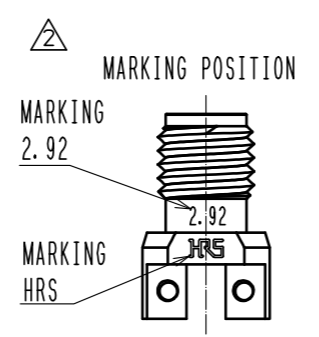


May.1.2022 Copyright 2022 HIROSE ELECTRIC CO., LTD. All Rights Reserved.
In case of consideration for using Automotive equipment / device which demand high reliability, kindly contact our sales window correspondents.



- NOTES
- 1 WHEN MATING THE CONNECTOR, PLEASE HOLD MILLING AREA OF 6.4 ± 0.2 WITH A SPANNER NOT TO PLACE STRESS ON PCB BY THE TORQUE.
 - 2 0-80UNF-2B SCREW TIGHTENING TORQUE IS $0.09 \text{ N} \cdot \text{m}$. PLEASE TIGHTEN THE SCREWS EVENLY WHEN MOUNTING THE CONNECTORS TO ENSURE STABLE ELECTRICAL CONTACT.
 - 3 PLEASE USE A PCB MOUNTING SCREW OF THE LENGTH OF L(mm). THE LENGTH OF L(mm) IS PCB THICKNESS $t_1(\text{mm})$ + SPRING WASHER THICKNESS $t_2(\text{mm})$ + $1.8(\text{mm})$. PLEASE USE A SCREW WITH SPRING WASHER.
 - 4 THE INDICATED DIMENSION IS THE CASE OF WHICH DIELECTRIC CONSTANT OF SUBSTRATE IS 3.35 AND THICKNESS IS $t=0.2\text{mm}$. LAND PATTERN LAYOUT DEPENDS ALSO ON ELECTRIC CONSTANT, THICKNESS AND LAYER CONSTRUCTION OF PCB. FOR BETTER PERFORMANCE, SIMULATION OF PCB WITH CONNECTOR IS RECOMMENDED.
 - 5 RECOMMENDED PCB THICKNESS t_1 IS GREATER THAN 1.0mm.
 - 6 SIDE PLATING OF THE BOARD IS RECOMMENDED.
 7. THIS CONNECTOR SHOULD BE USE FOR TEST PORT ONLY.



MOUNTING OF CONNECTOR

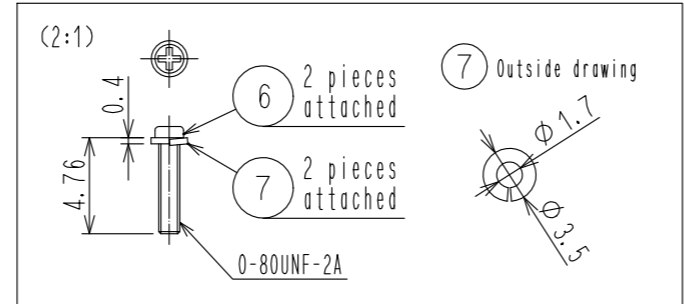
- (1) WHEN THE CONNECTOR IS MOUNTED ON PCB, PLEASE DO NOT ALLOW A GAP BETWEEN THE EDGE OF PCB AND CONNECTOR.
- (2) PLEASE MOUNT THE CONNECTOR AS LOCATED IN THE MIDDLE OF THE SIGNAL PAD OF PCB.
- (3) SOLDERING CONDITIONS:(OPTIONAL:IT'S POSSIBLE TO USE WITHOUT SOLDERING)
FOR THE MANUAL SOLDERING, SOLDERING IRON BIT TEMPERATURE IS 380°C MAX. FOR 5 SECONDS MAX.

(PLEASE MOUNT THE CONNECTOR AS LOCATED IN THE MIDDLE OF THE SIGNAL PAD OF PCB.)

RECOMMENDED PC BOARD PATTERN DRAWING

REGIST FOR SIGNAL PAD AND GROUND PAD IS PROHIBITED.

(DRAWING CHANGED) B(10:1)



3	BERYLLIUM COPPER	GOLD PLATING	7	STAINLESS STEEL	Spring washer		
2	STAINLESS STEEL	PASSIVATE	6	STEEL	0-80UNF-2A Screw		
1	BRASS	NICKEL PLATING	5	POLYETHER IMIDE			
			4	POLYETHER IMIDE			
NO.	MATERIAL	FINISH . REMARKS	NO.	MATERIAL	FINISH . REMARKS		
UNITS		SCALE	COUNT	DESCRIPTION OF REVISIONS	DESIGNED	CHECKED	DATE
mm		5 : 1	3	DIS-D-00003038	HA. NISHIMURA	MH. OGUSU	18. 04. 10
APPROVED : KH. IKEDA 17. 01. 30			DRAWING NO. EDC-368891-12-00				
CHECKED : TS. NOBE 17. 01. 30			PART NO. HK-LR-SR2(12)				
DESIGNED : TP. MATSUMOTO 17. 01. 30			CODE NO. CL338-0079-0-12				
DRAWN : TP. MATSUMOTO 17. 01. 30							