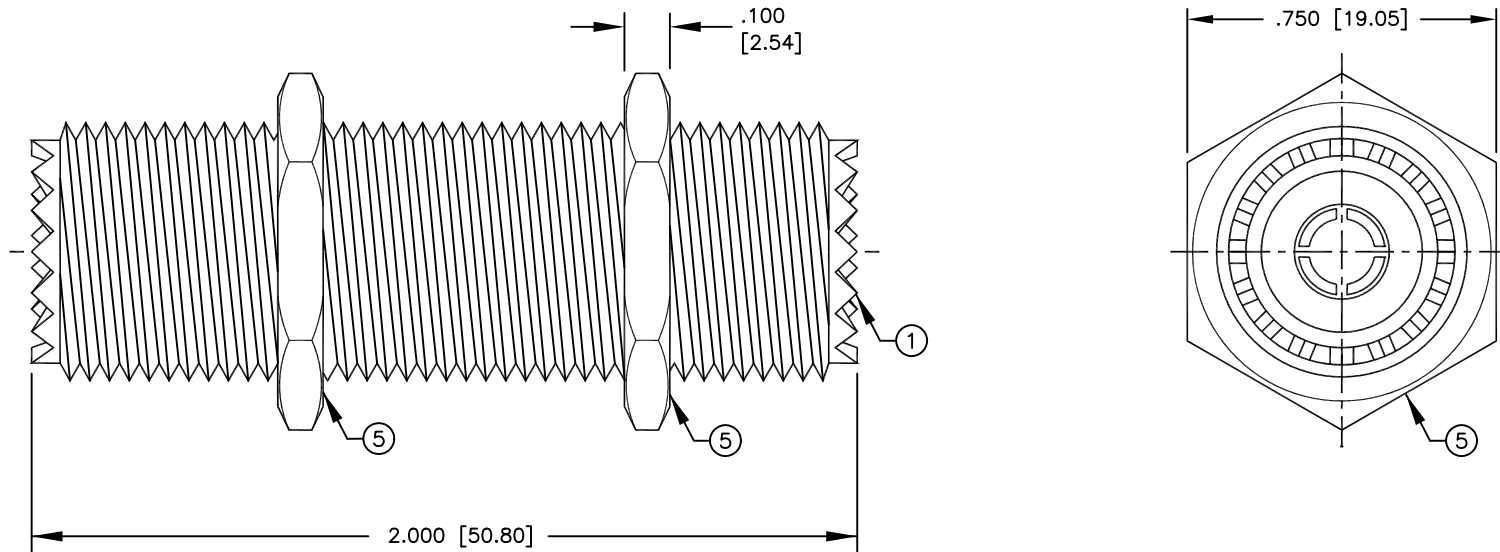


SPECIFICATION CONTROL DRAWING

THIS DRAWING CONTAINS INFORMATION PROPRIETARY TO RF INDUSTRIES, LTD. ANY UNAUTHORIZED USE OF THIS DRAWING IS EXPRESSLY PROHIBITED. ANY VIOLATION IS PUNISHABLE UNDER U.S. COPYRIGHT LAWS.

REV	DESCRIPTION	DWN	DATE	APPROVED
C1	HEX NUT CHANGE \ RPLS DWG #7466	DM	12/21/92	J. BENZ
D1	UPDATE DRAWING \ RPLS DWG #7850	PB	4/19/93	J. BENZ
E	CHANGE DIELECTRIC CONFIGURATION	PB	7/13/93	K.HARTMANN
F	ADD RETAINING RING NOTE \ STANDARDIZE	KMM	2/21/95	R. RICE

ALL DIMENSIONS ARE REFERENCE ONLY



SPECIFICATIONS:

IMPEDANCE: NON CONSTANT
 WORKING VOLTAGE: 500 VRMS @ SEA LEVEL
 FREQUENCY RANGE: 0-300 MHz

DIMENSIONS ARE IN INCHES AND [MILLIMETERS]

UNLESS OTHERWISE NOTED TOLERANCES ARE:

DECIMALS DIAMETER

RFconnectors
 DIVISION OF RF INDUSTRIES, LTD.

7610 MIRAMAR RD
 SAN DIEGO, CA 92126
 (619)549-6340
 (619)549-6345 FAX

RFU-537 \ UG-363/U

UHF DOUBLE FEMALE BARREL BULKHEAD ADAPTER

5	HEX NUT	2	BRASS	NICKEL	DRAWN K. MAXWELL	2/21/95
4	RETAINING RING	1	BRASS	NICKEL		
3	DIELECTRIC	2	* DELRIN	NONE	CHECKED	
2	CONTACT	1	BRASS	SILVER	ORJ DRAWN C. JONES	10/24/91
1	BODY	1	BRASS	NICKEL	APPROVALS	DATE

SIZE A	CABLE GROUP N/A	DWG NO. 8093	REV F
SCALE: 2:1		CAD FILE 13ARC B	SHEET 1 OF 1