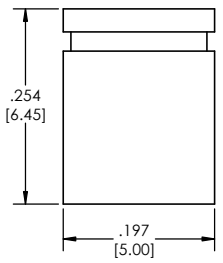
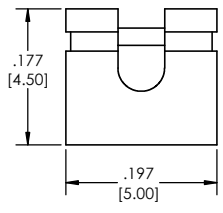


03 SERIES
HIGH PROFILE
HIGH INSERTION



01 SERIES
LOW PROFILE
LOW INSERTION



SH-1 **X** - **XX** - **LF**
(A) (B) (C)

- A. Plating Options
- See Plating Options below
- B. Shunt Style
- See Shunt Style box below
- C. Lead Free

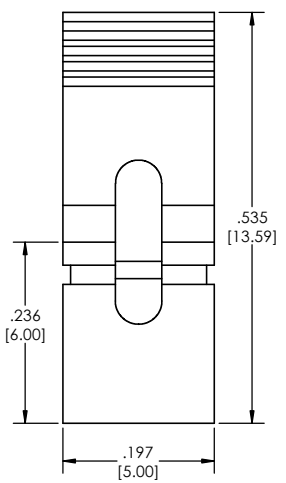
Plating options	
G	- 10µ Gold on Contact Area/ Flash on Tail
F	- Gold Flash over Entire Pin
T	- Matte Tin all Over

Shunt Style	
01	01 Series Low Profile, Low Insertion
02	02 Series High Profile, Low Insertion
03	03 Series High Profile, High Insertion
04	04 Series High Profile, High Insertion, Handle Option

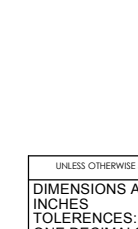
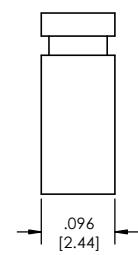
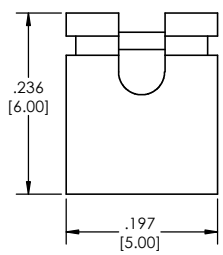
Specifications:
 Current Rating: 3.0 Ampere
 Insulation Resistance: 1000M Ohms Min.
 Dielectric Withstanding: 600V AC
 Contact Resistance: 20M Ohms Max.
 Operation Temperature: -40°C to +105°C
 Max. Process Temperature
 Peak: 260°C up to 10 secs.
 Process: 230°C up to 60 secs.
 Wave: 260°C up to 6 secs.
 Manual Solder: 350°C up to 5 secs.

Materials:
 Contact Material: Phosphor Bronze
 Insulator Material: Nylon 6T

04 SERIES
HIGH PROFILE
HIGH INSERTION
HANDLE OPTION



02 SERIES
HIGH PROFILE
LOW INSERTION



Products cut to specific sizes are uncancelable/ nonreturnable.
 Parts are subject to change without notice.



PROPRIETARY AND CONFIDENTIAL
 THE INFORMATION CONTAINED IN THIS DRAWING IS THE SOLE PROPERTY OF Major League Electronics. ANY REPRODUCTION IN PART OR AS A WHOLE WITHOUT THE WRITTEN PERMISSION OF Major League Electronics IS PROHIBITED.

UNLESS OTHERWISE SPECIFIED:	
DIMENSIONS ARE IN INCHES	
TOLERANCES:	
ONE DECIMALS ±.100	
TWO DECIMAL ±.010	
THREE DECIMAL ±.005	
FOUR DECIMAL ±.002	
NEXT ASSY	USED ON
APPLICATION	DO NOT SCALE DRAWING

DRAWN	EOW	DATE	01/19/15
CHECKED	GWE	DATE	01/19/15
ENG APPR.			
MFG APPR.			
INTERPRET GEOMETRIC TOLERANCING PER:		ADDRESS:	
MATERIAL:		2533 Centennial Blvd.	
FINISH:		Jeffersonville, IN 47130	
		Phone: 812-670-4174	
		Fax: 812-670-4175	
		E-Mail: mle@mlelectronics.com	

TITLE: SH-1 SERIES
 SIZE DWG. NO. **C** REV **B**
 SCALE: 8:1 SHEET 1 OF 1