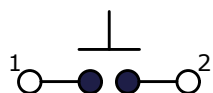


SCALE: 4:1

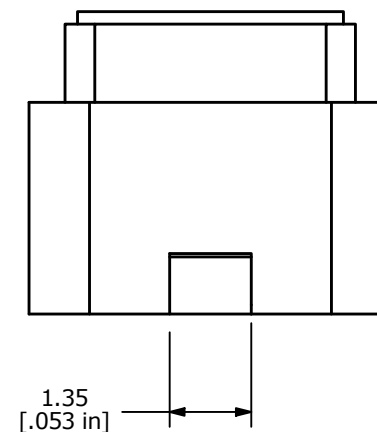
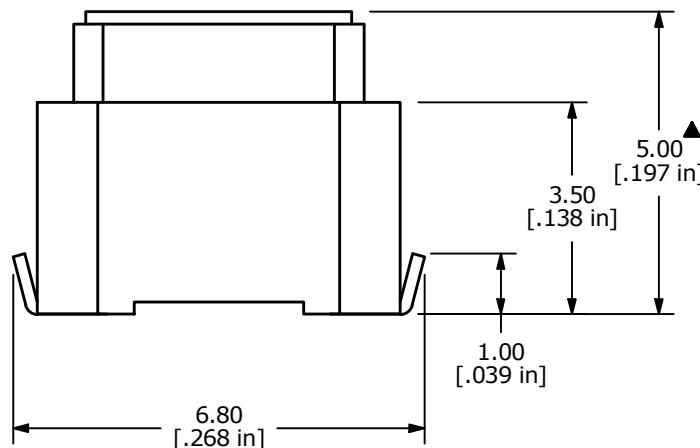


▲ CIRCUIT: SPST

▲ ACTUATOR
COLOR: BLACK

NOTES:

1. ALL DIMENSIONS IN MM [INCH]
2. TERMINAL NUMBERS FOR REF. ONLY
3. TOLERANCE: X.X = ± 0.4
X.XX = ± 0.25
4. RATING: 50mA @ 12VDC
5. TRAVEL: 1.3 ± 0.2
- ▲ 6. OPERATING FORCE: $260 \pm 50gF$
7. ELECTRICAL LIFE: 100,000 CYCLES MIN.
8. CONTACT RESISTANCE: 100m Ω MAX.
9. CONTACT MATERIAL: SILVER
10. INSULATION RESISTANCE: >100M OHMS AT 100 VDC
11. DIELECTRIC STRENGTH: 250VAC FOR ONE MINUTE
12. OPERATING TEMPERATURE: -20C to +80C
- ▲ 13. PACKAGING: TAPE AND REEL, 2000 PIECES PER REEL
14. ▲ DENOTES CRITICAL PARAMETER



REV	ECO NO	DESCRIPTION	DATE	BY	E-SWITCH®			OBJECT ID	
F	ECO-100472	note 13 to 2000 pieces	10/21/21	MW	TITLE TL9210AF260Q			000018047	
THE INFORMATION CONTAINED IN THIS DOCUMENT IS PROPRIETARY TO E-SWITCH AND IS NOT TO BE COPIED OR TRANSFERRED					SCALE	DATE	DR	DWG	REV
					8:1	7/21/2014	rc	P010921	F